

# CHC Navigation Ltd

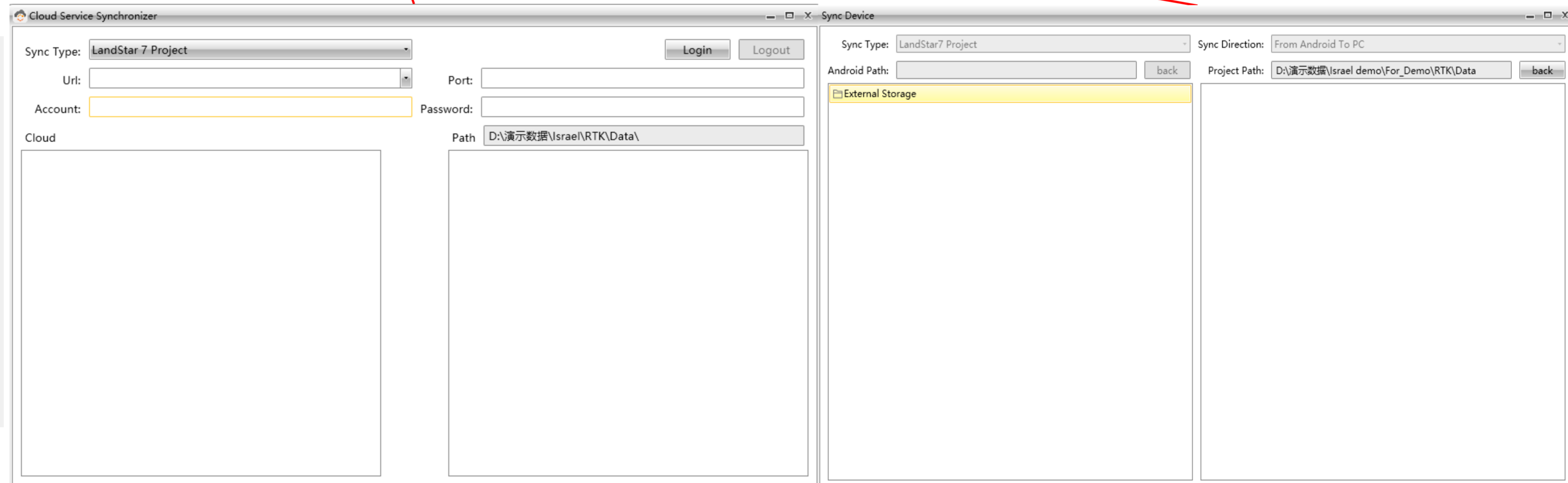
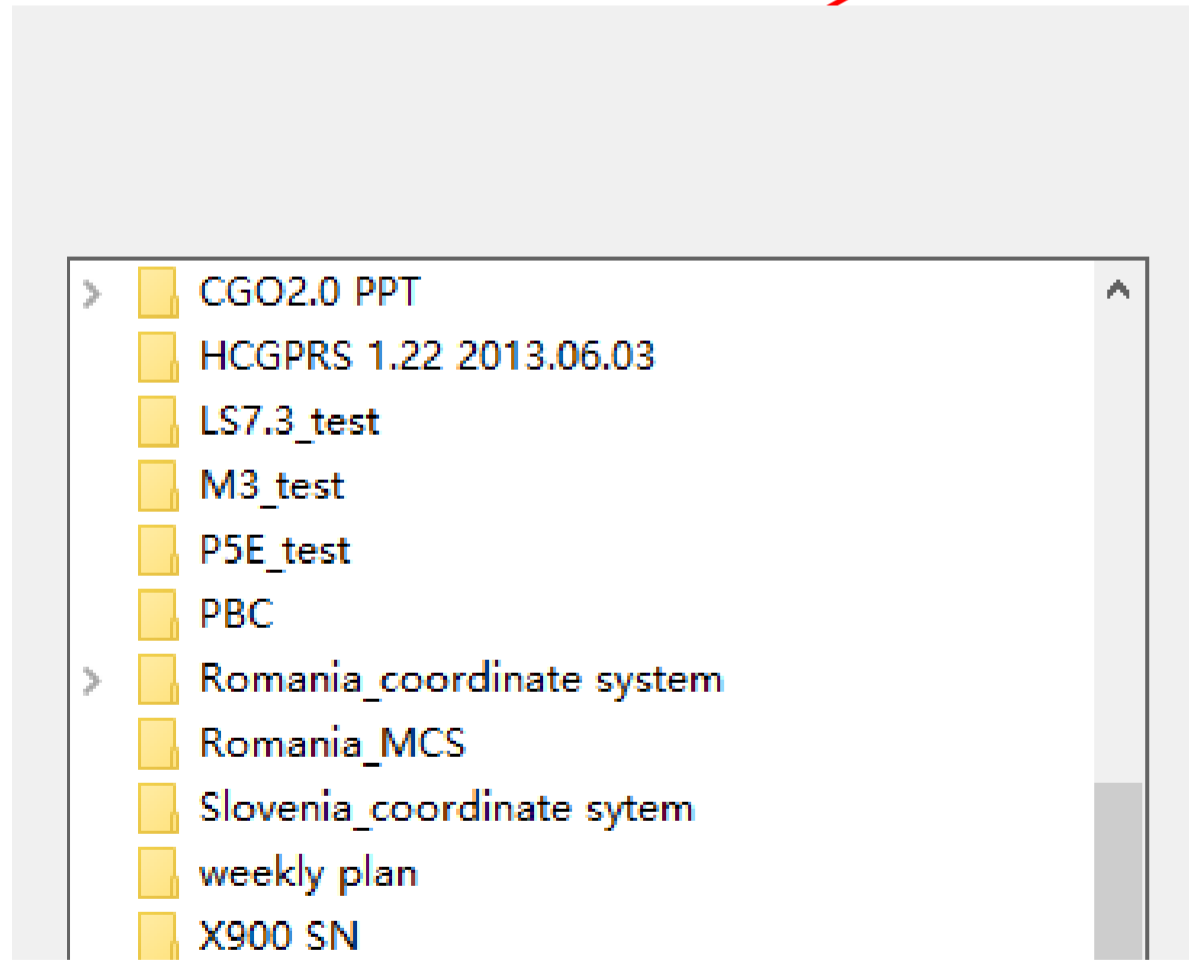
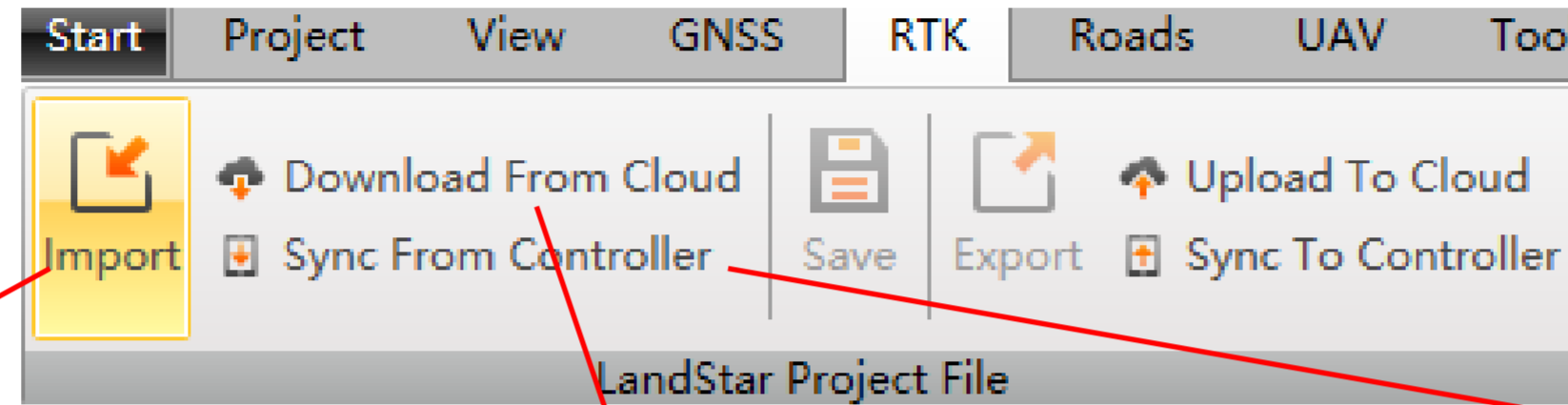
---

CGO2 Work Flow – LS7 data processing

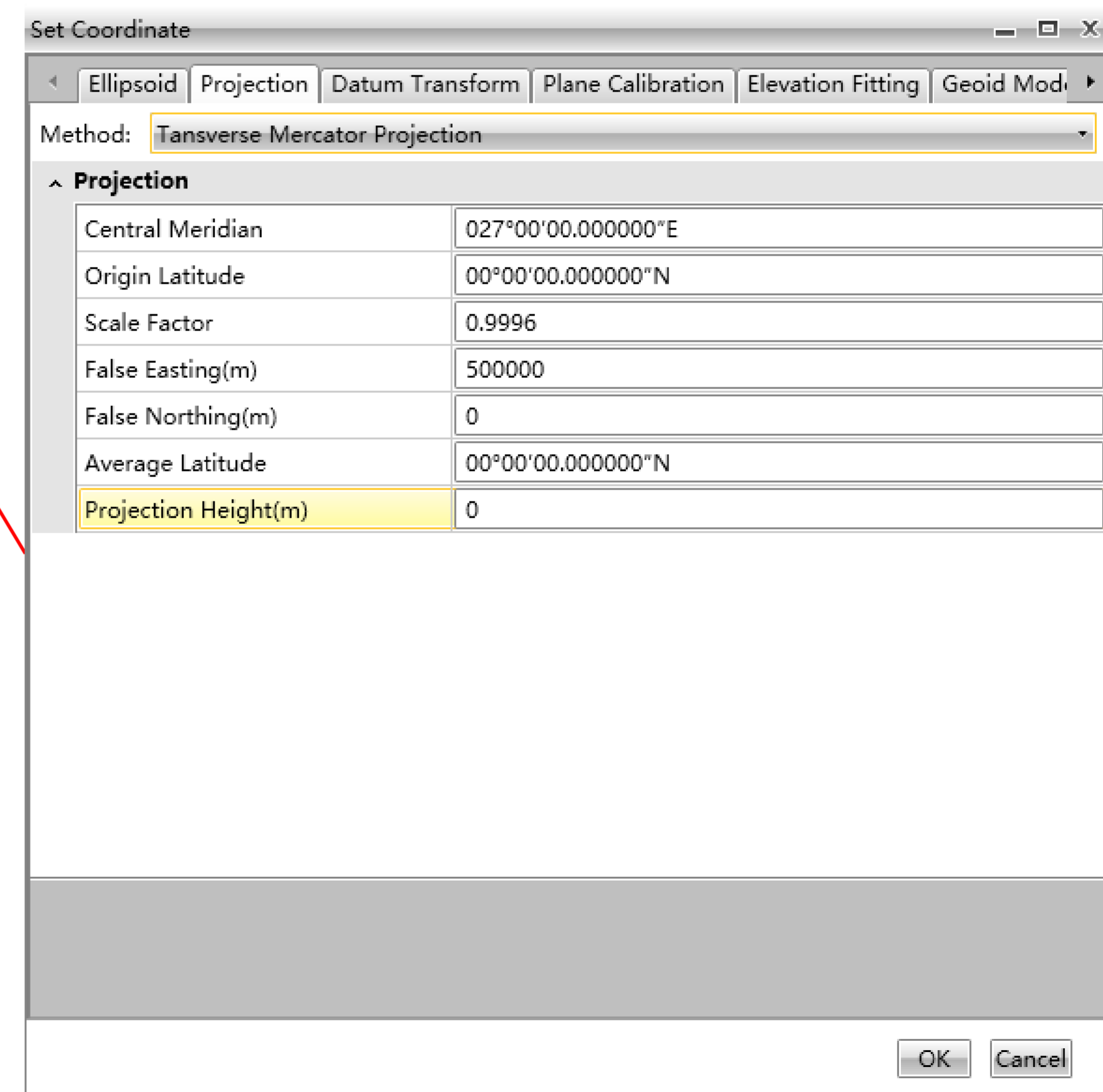
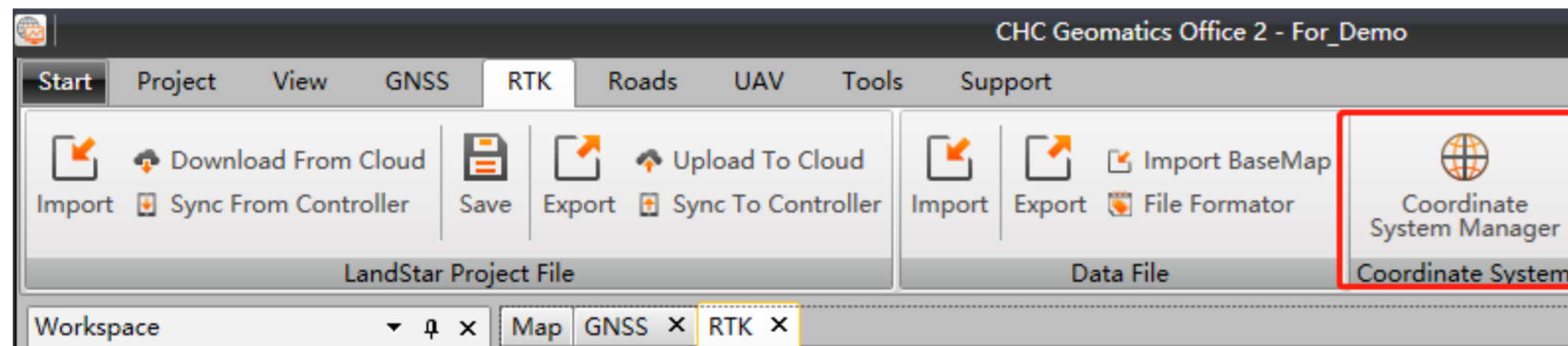
Step1: Create one new project

Please refer to [CGO2 Work Flow - Projects](#)

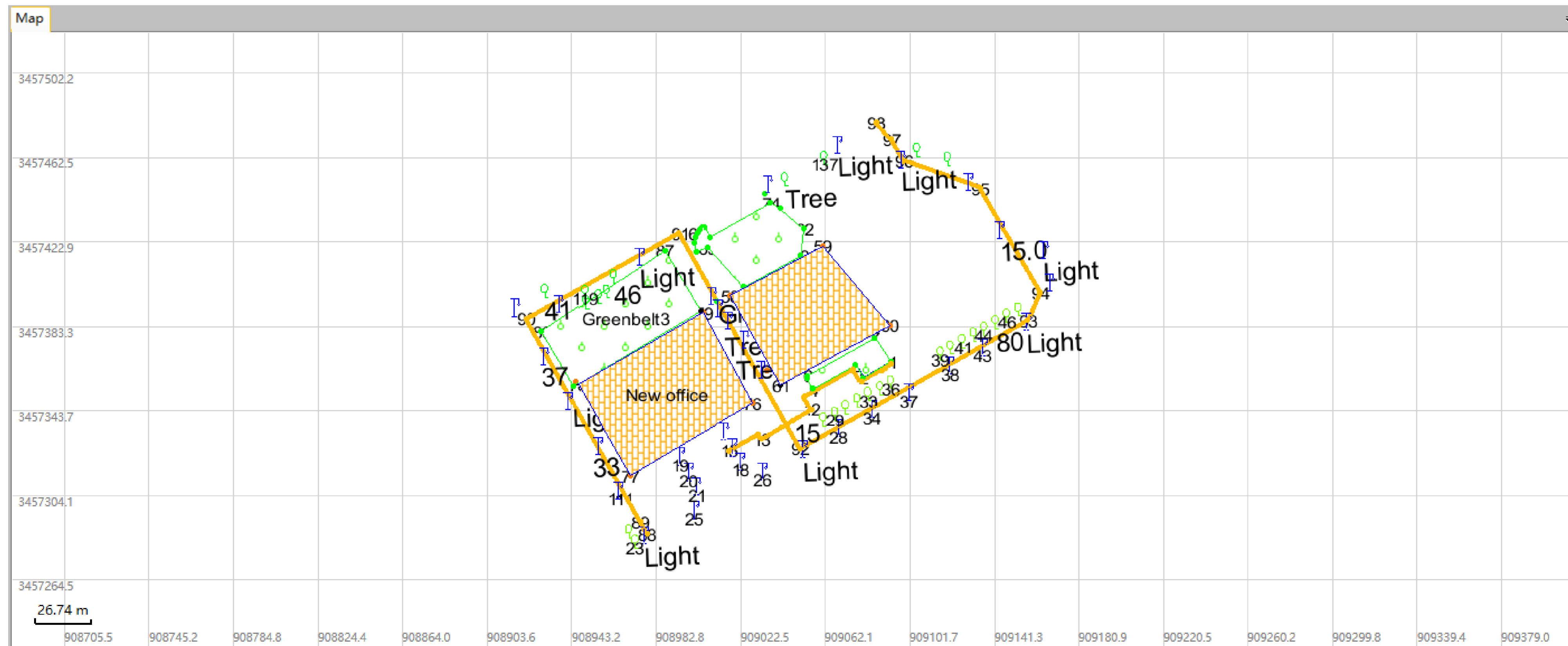
# Step2: Import LS7 project



# Tools - Manage coordinate system

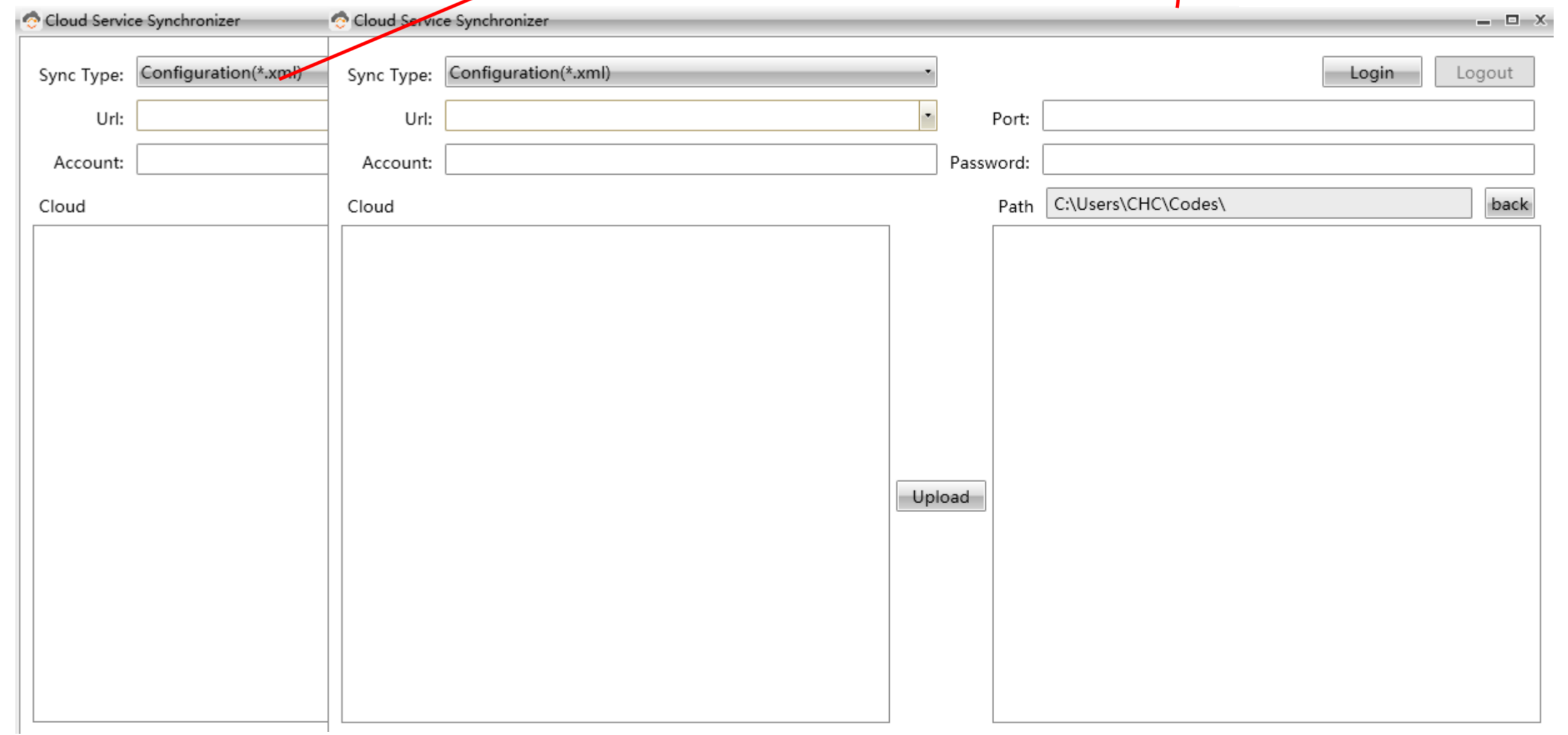
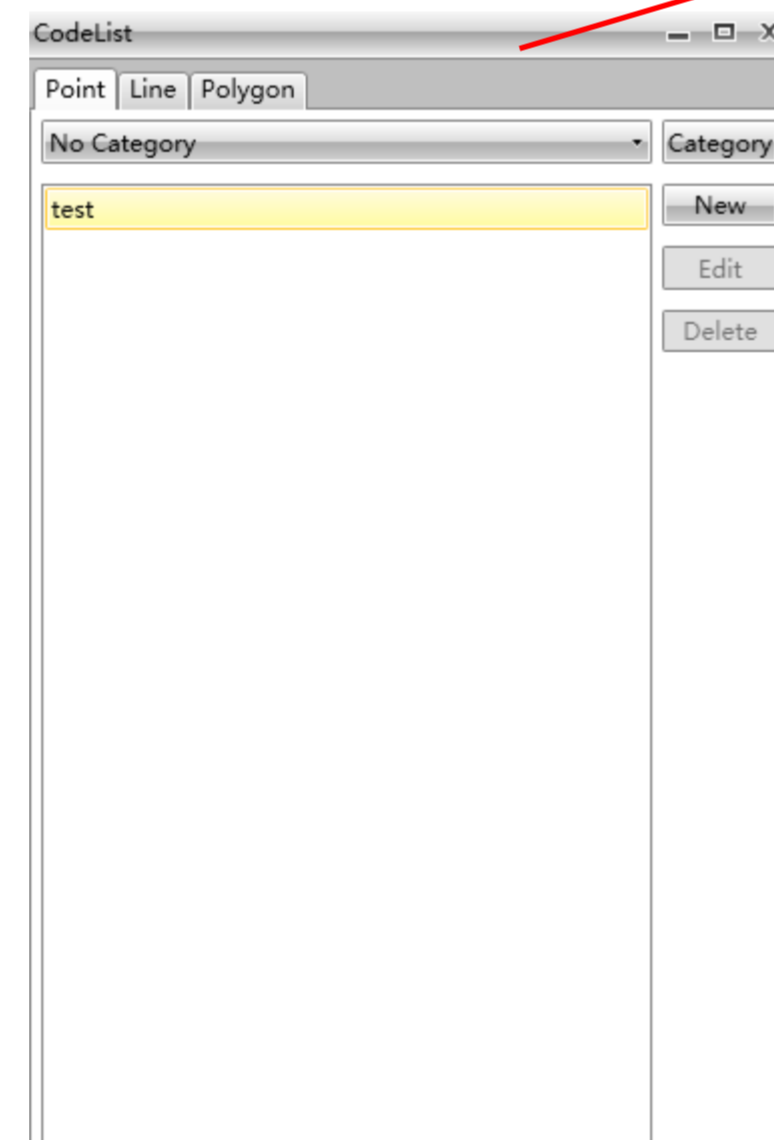
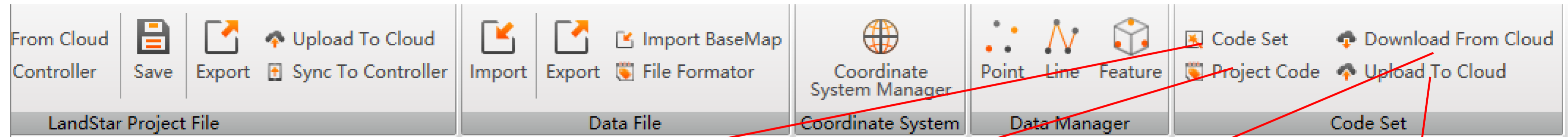


# Tools - Check in the Map view

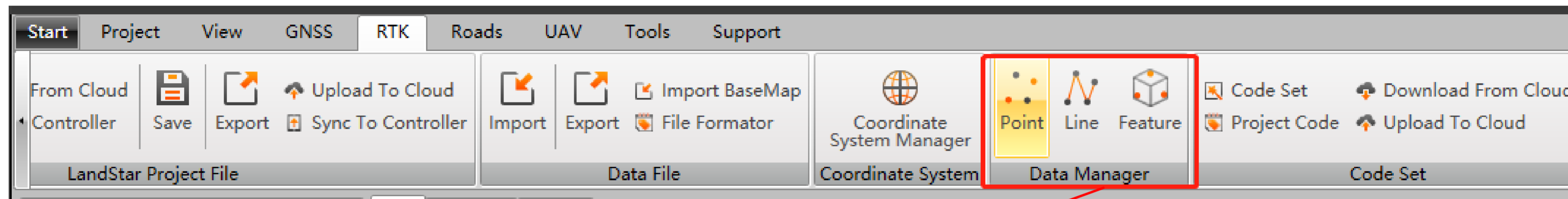




# Tools – Code list



# Tools – Data Management



RTK x

#	Name	Code	WGS84 Lat	WGS84 Lon	WGS84 H	WGS84 X	WGS84 Y	WGS84 Z
1	base_0		000°00'0.0000000°N	000°00'0.0000000°E	0	0	0	0
2	1		063°22'52.2036444°N	026°24'25.9051161°E	350.4034	2566570.18496	1274458.29885	5679453.8
3	control 1		000°00'0.0324698°N	022°30'40.5542681°E	1	5892151.14619	2441966.26052	0.99731

Page 1 of 1

Add Delete MultiChoose

0 Warnings 9 Notes

lap Successfully!

Property

A-Z

**General**

Point Name: KSHO

Code: KSHO

**Coordinate System**

Coordinate Sol: WGS84 Coordinate

Coordinate Typ: WGS-84

**Geodetic Coor.**

Lat.: 032°10'16.1689495

Lon.: 035°05'46.7286062

Ellipsoid(m): 355.0656

**Space Coor.**

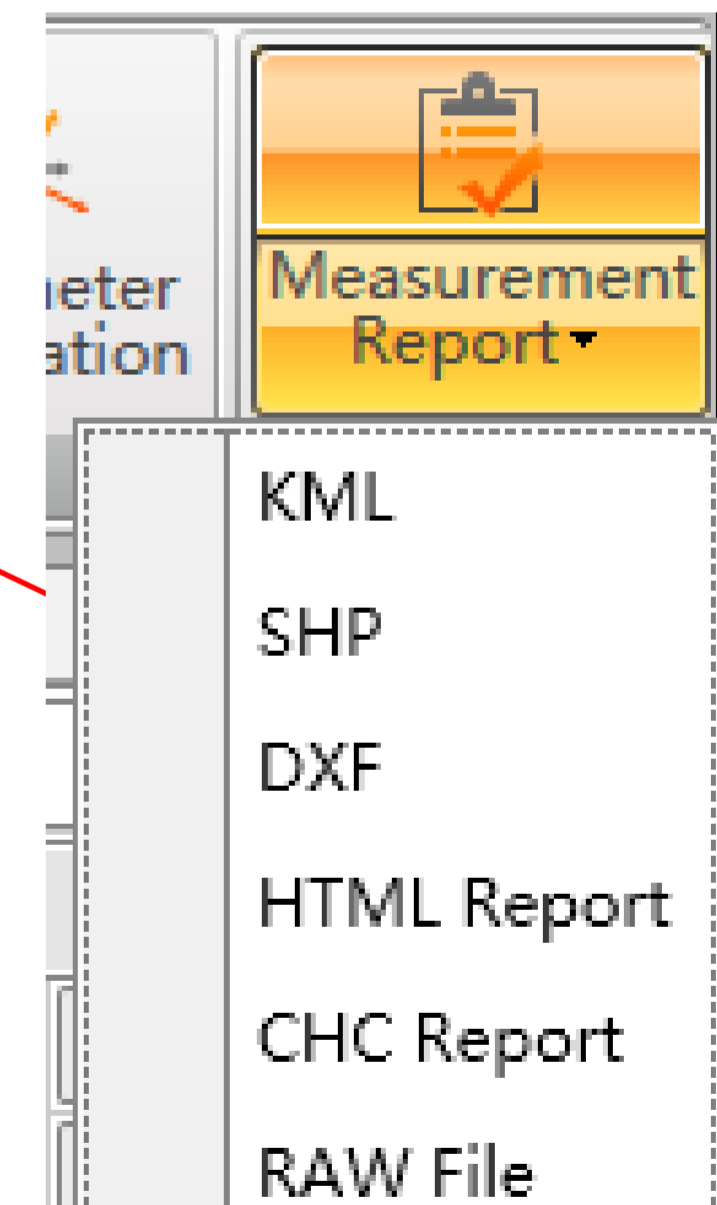
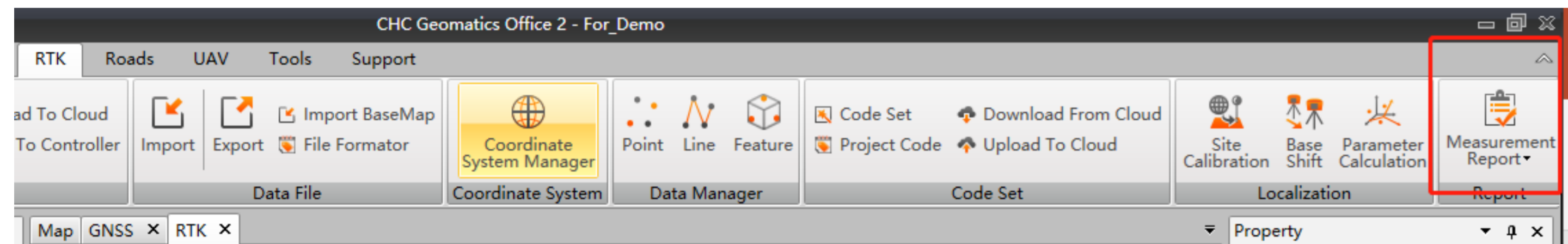
X(m): 4421707.77875

Y(m): 3107203.26875

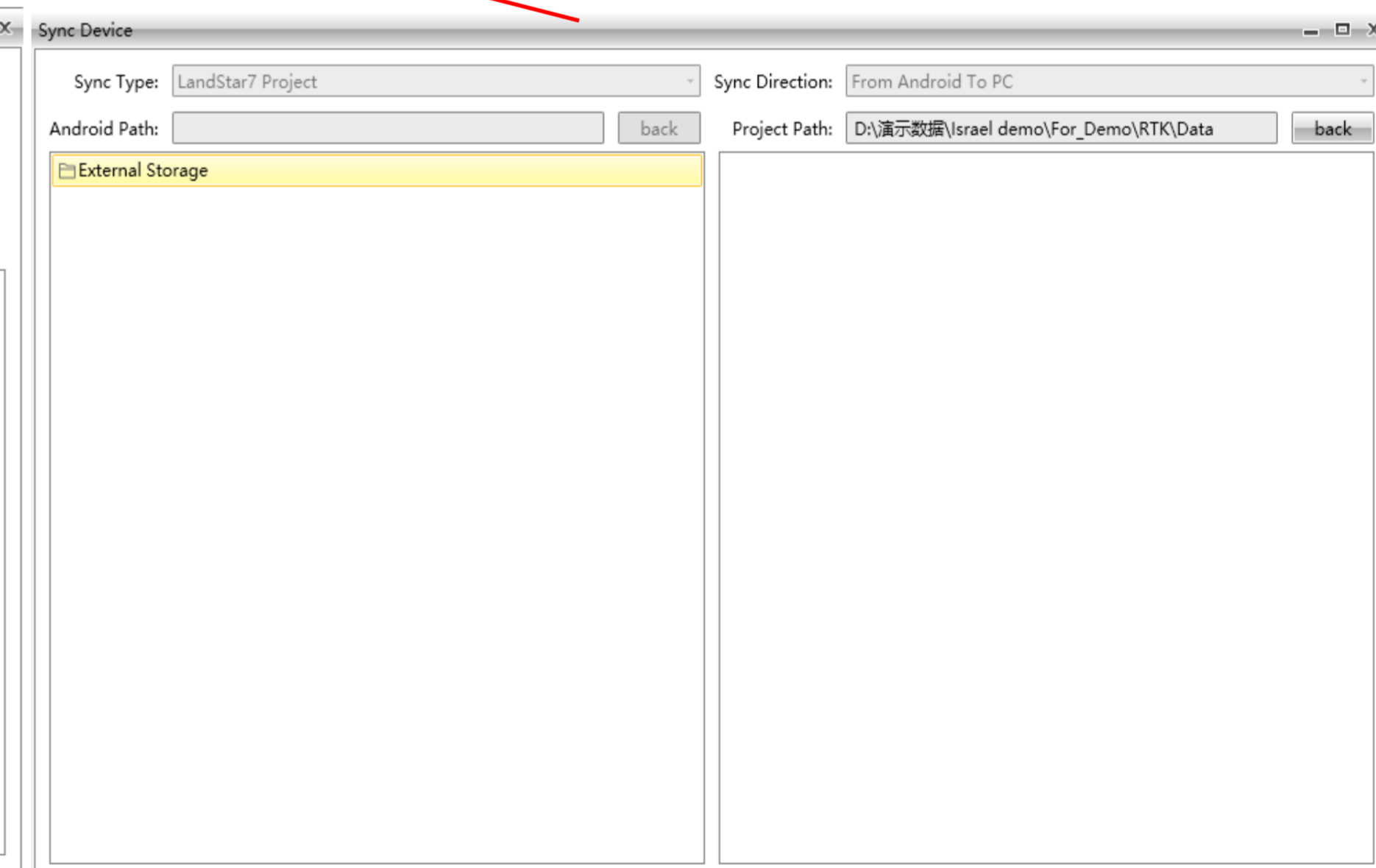
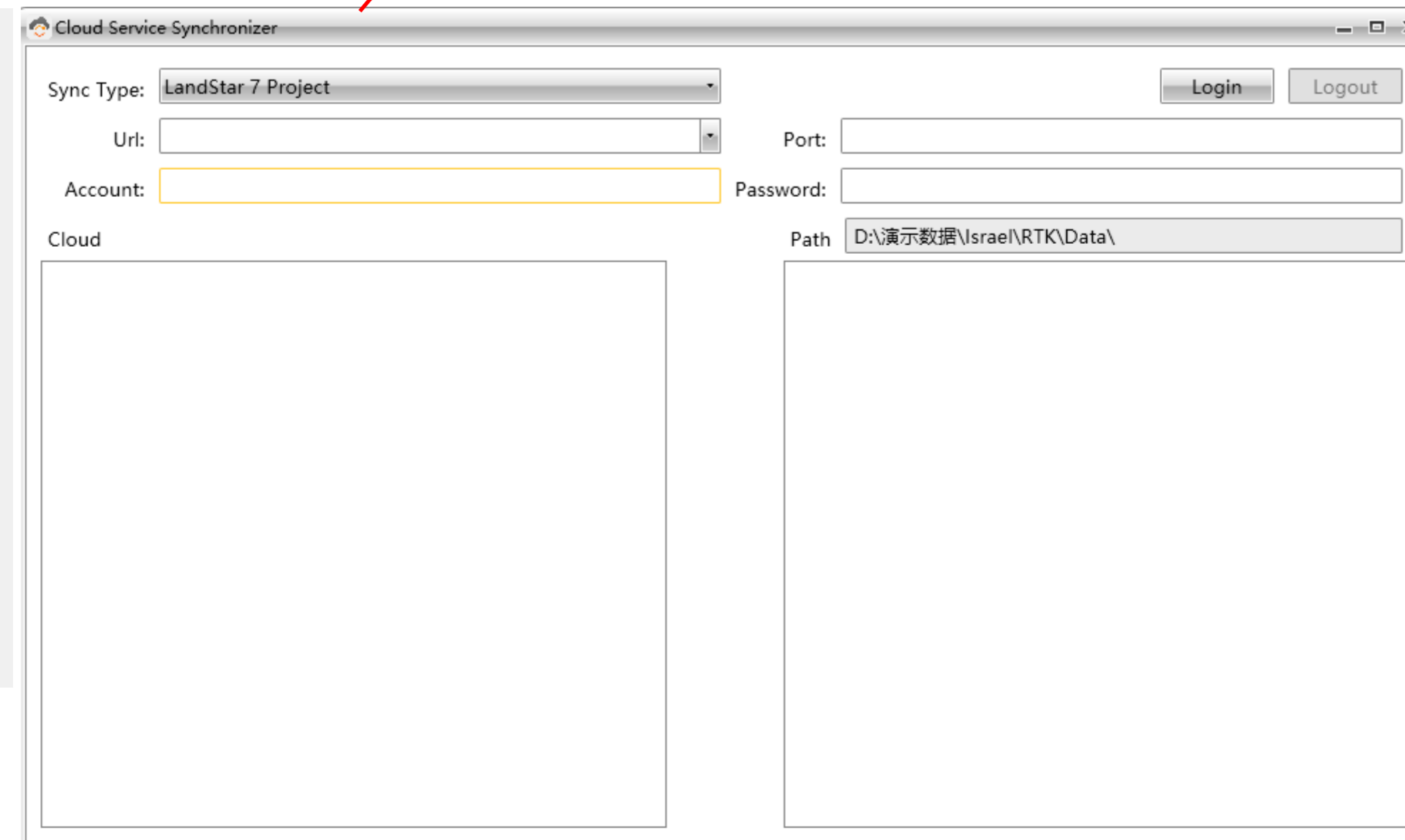
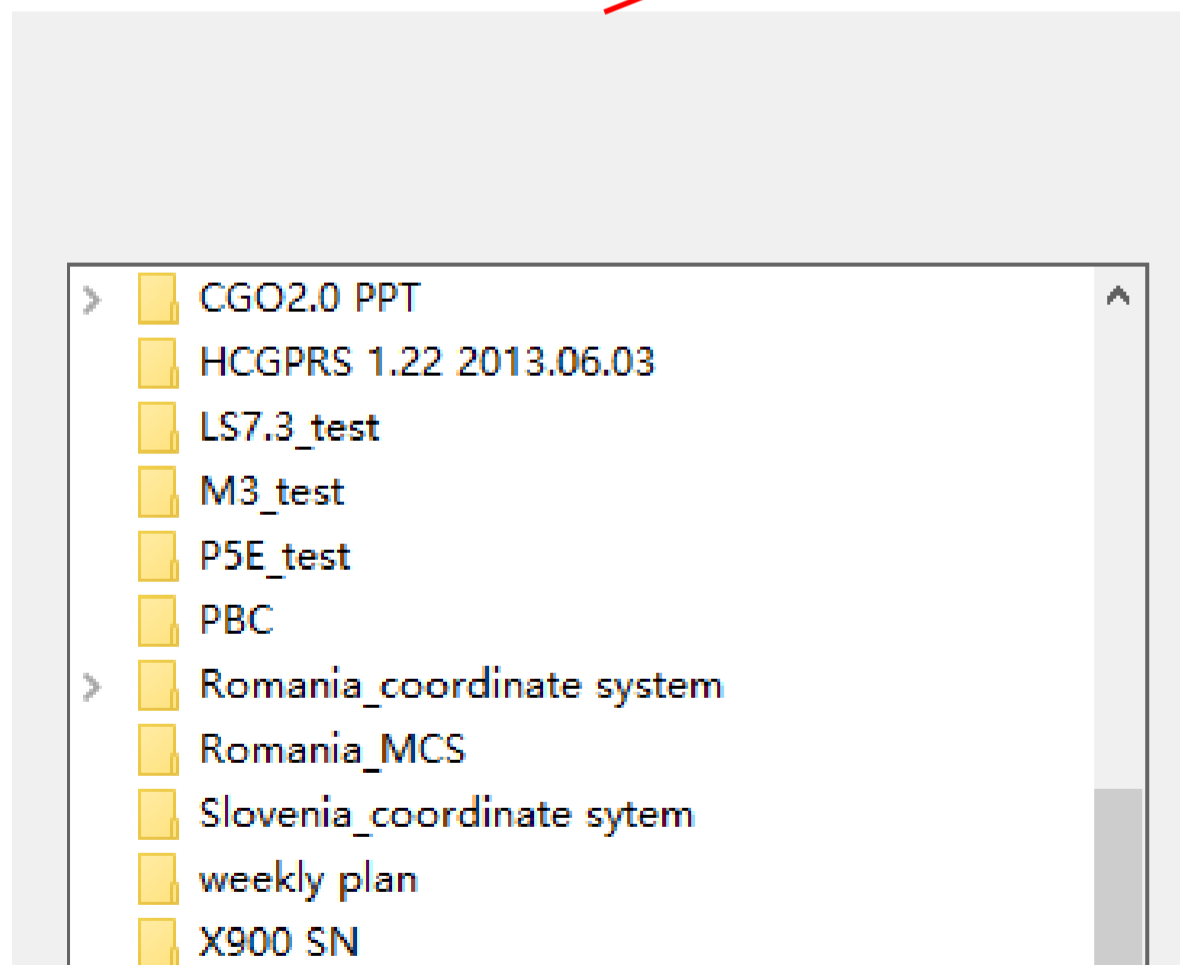
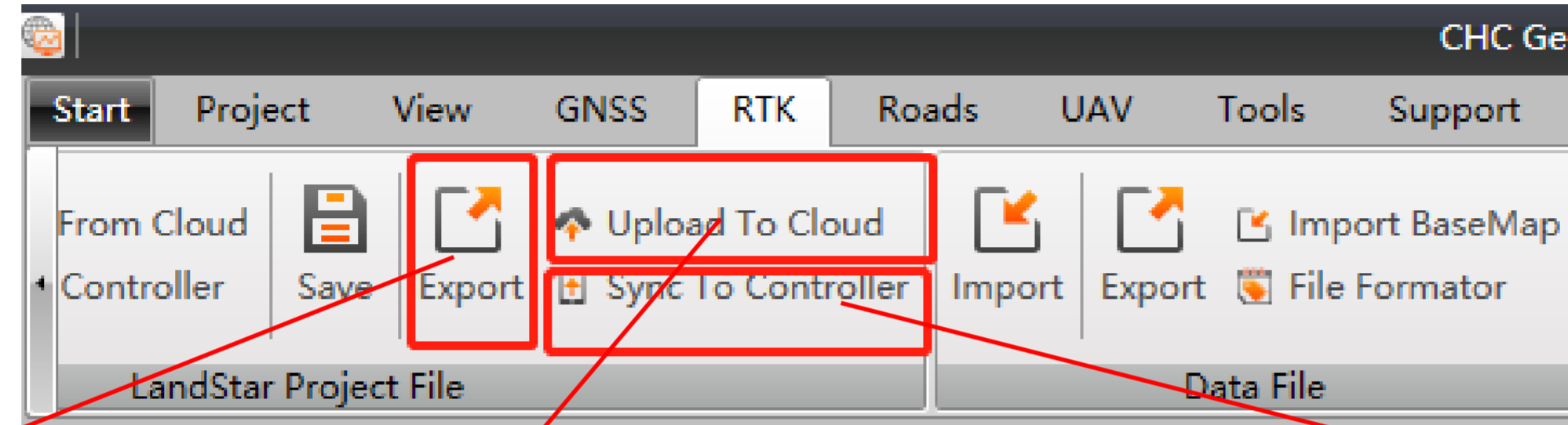
Z(m): 3376700.90840



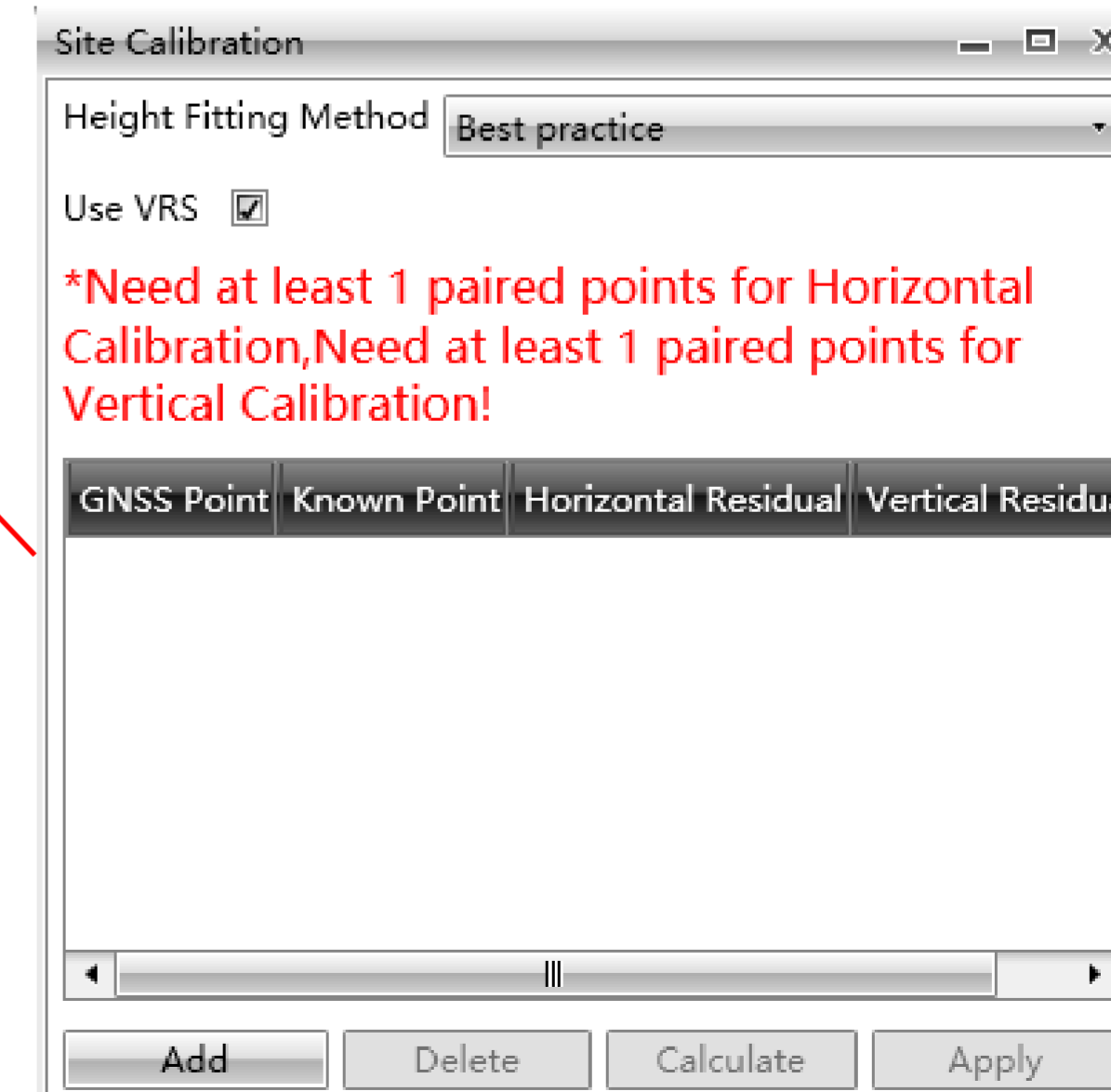
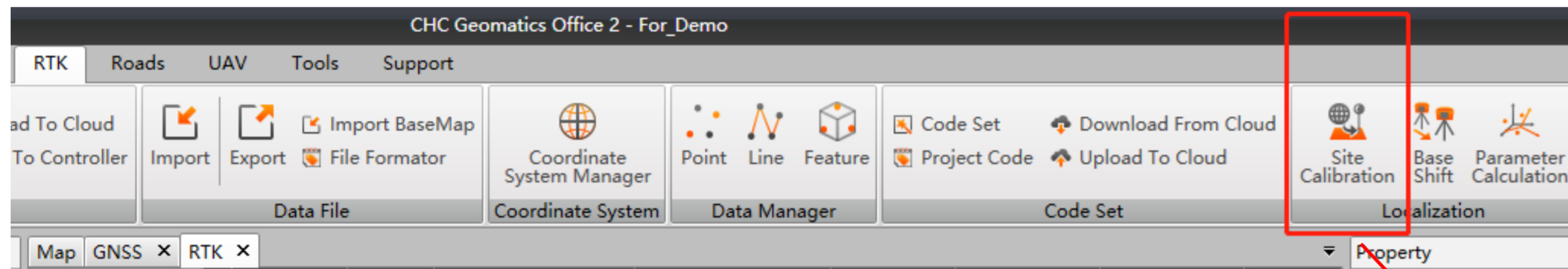
# Tools - Report



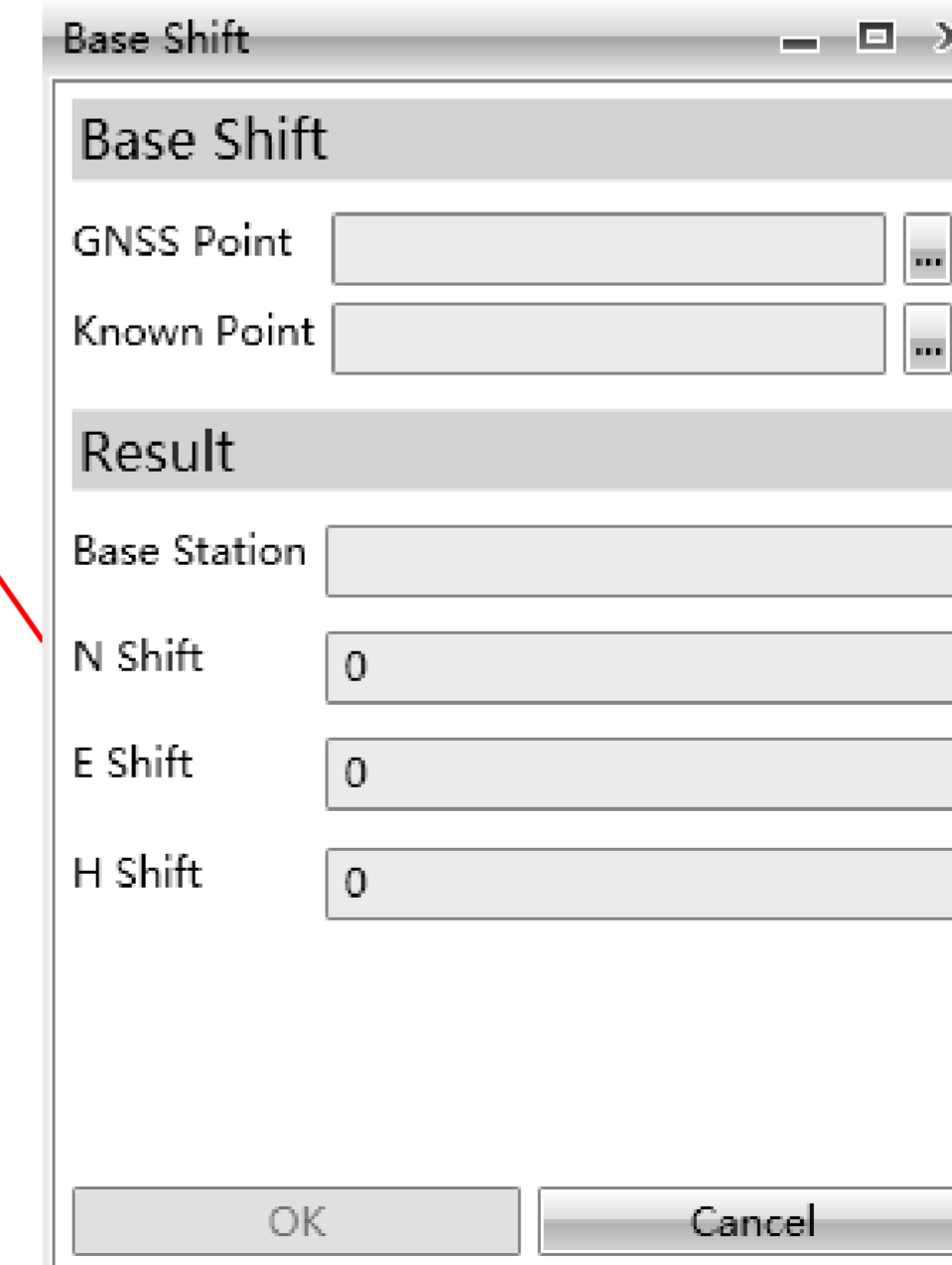
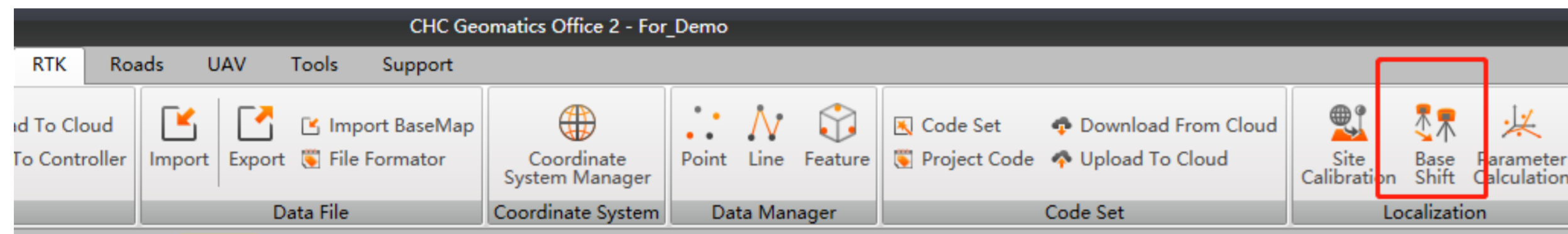
# Tools – Data sharing



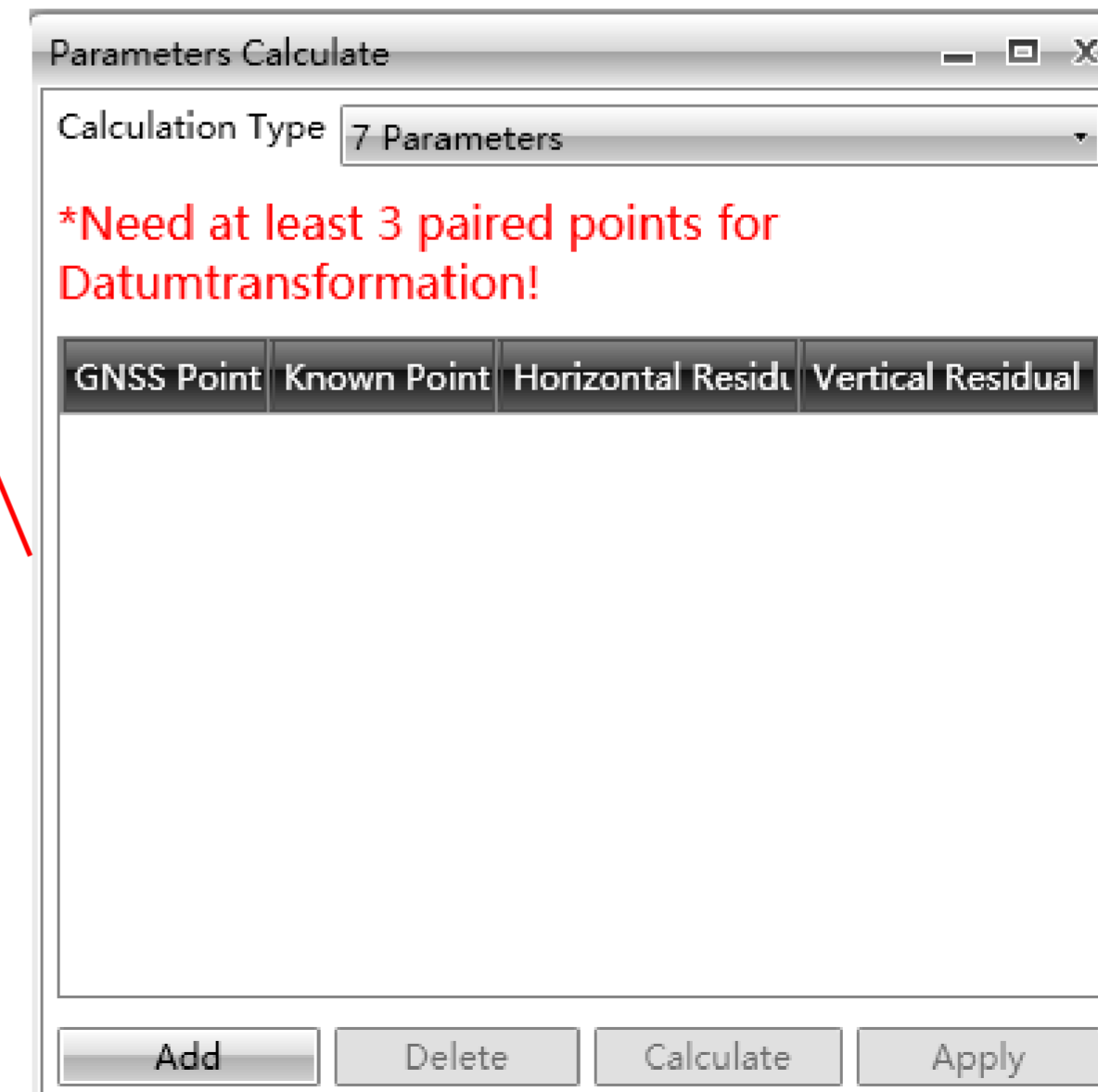
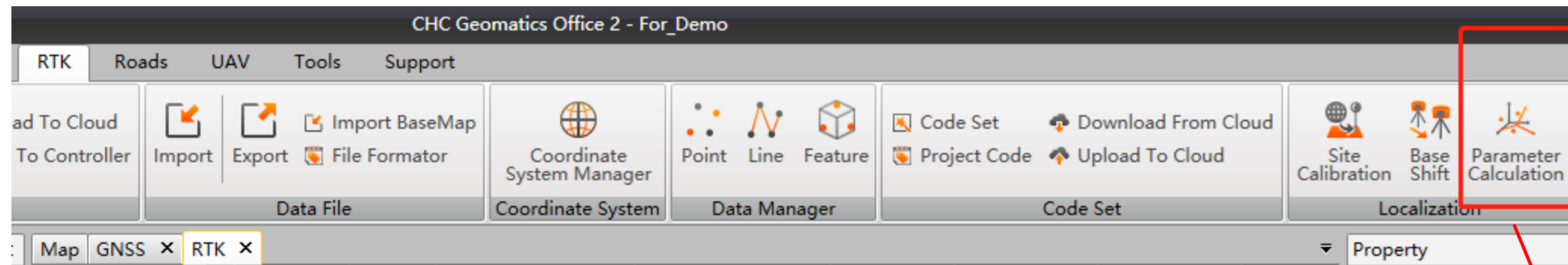
# Tools – Site Calibration



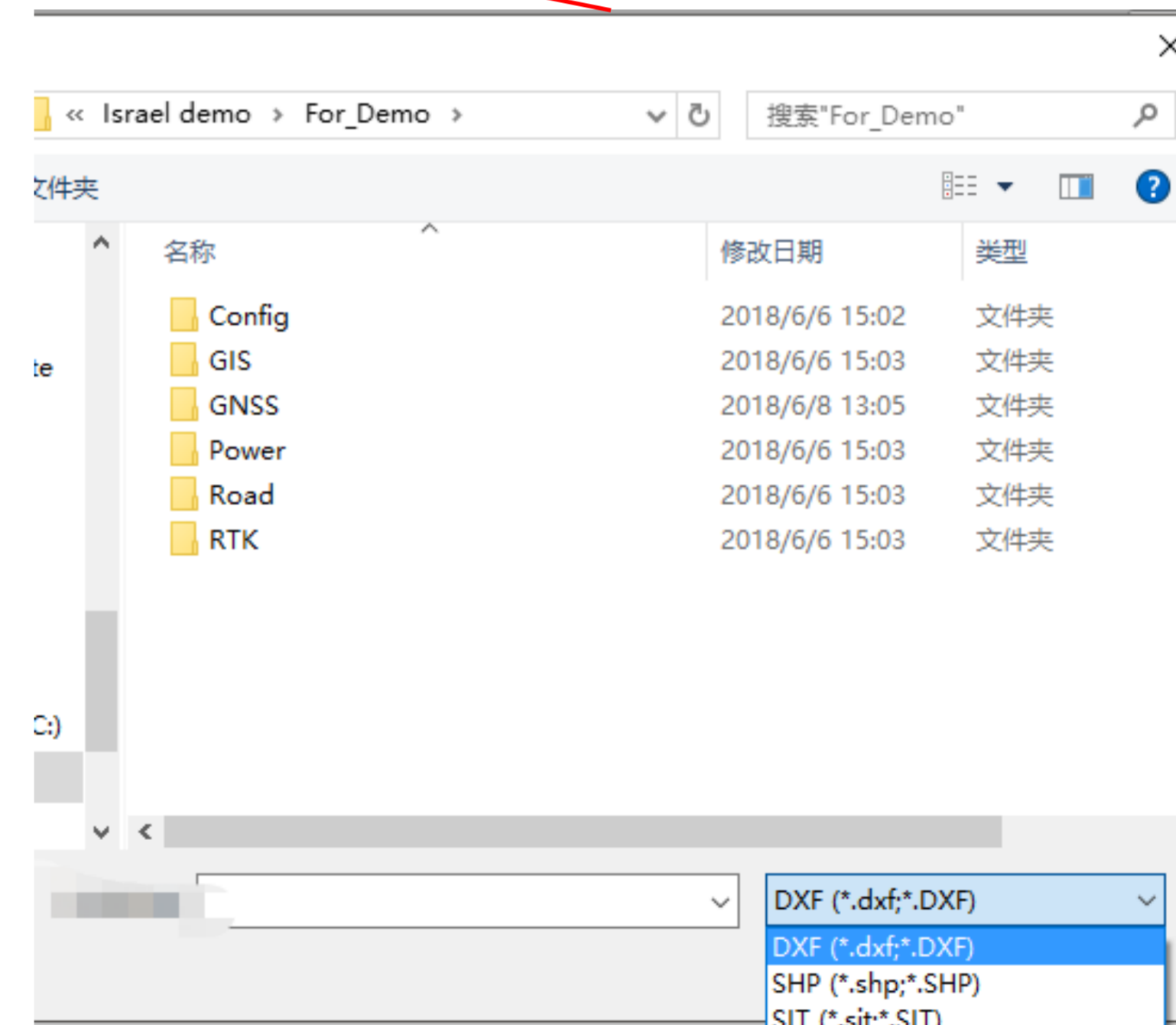
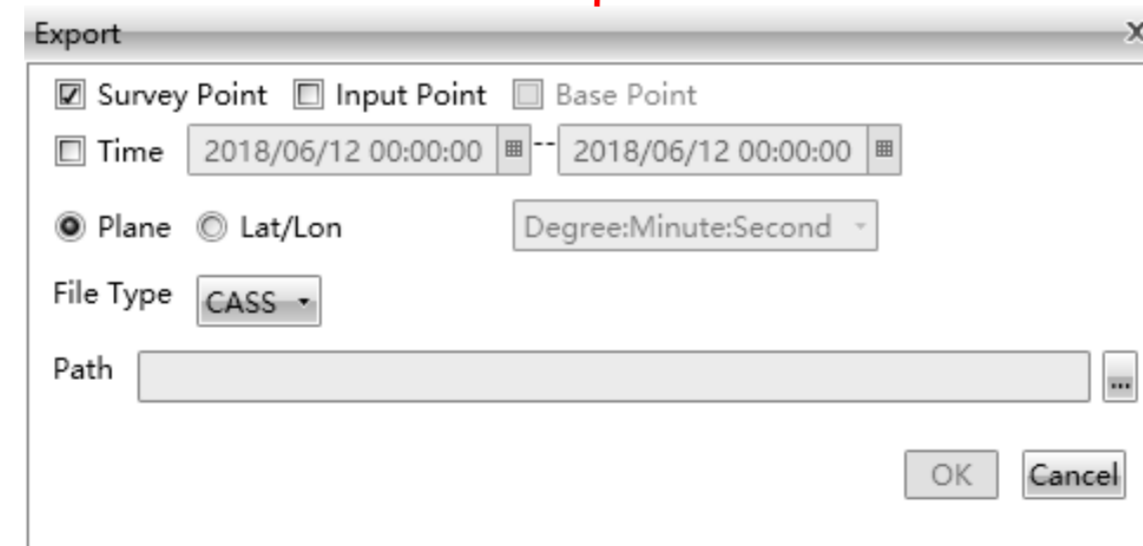
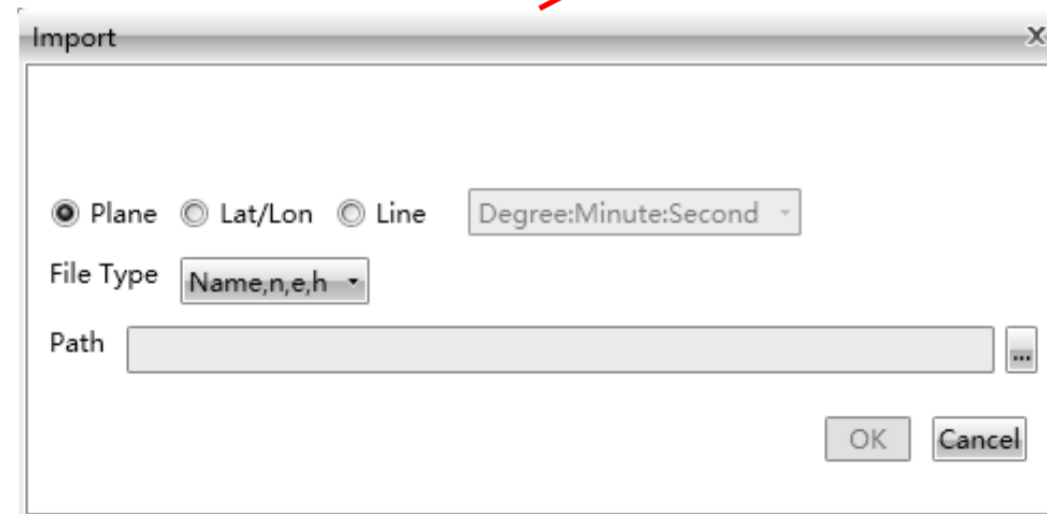
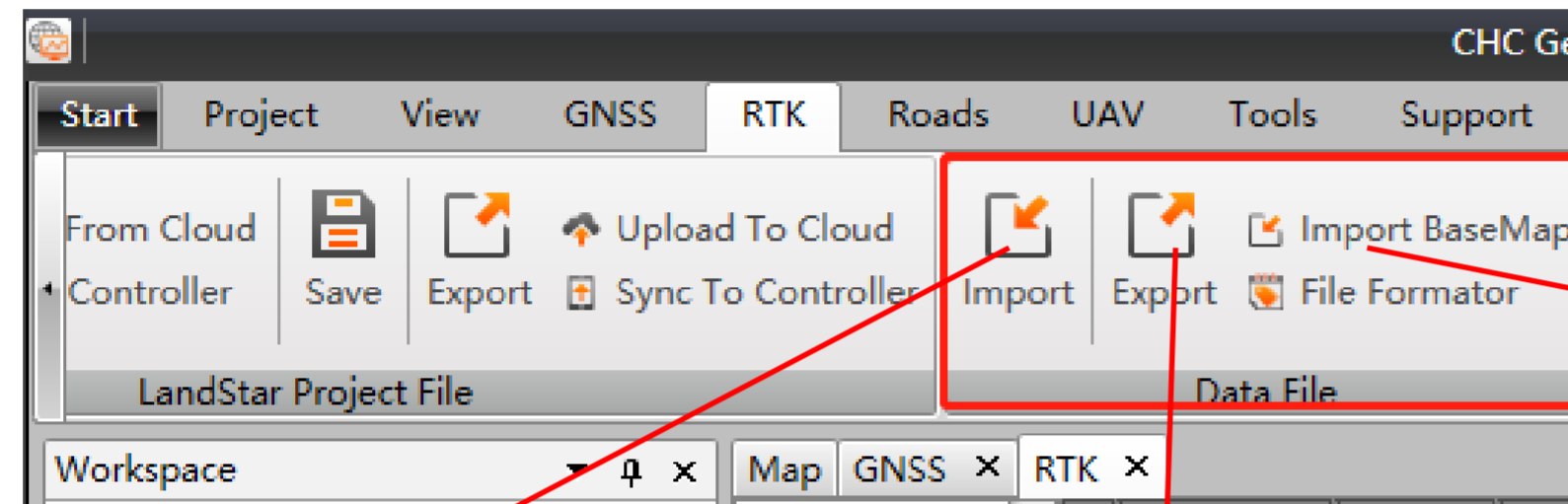
# Tools – Base Shift



# Tools – Parameters Calculation(Datum)



# Tools – Import/Export data from other sources



In the United States, contact

iGage Mapping Corporation  
+1-801-412-0011

[www.igage.com/cgo2](http://www.igage.com/cgo2)

For demos, pricing and additional information.

30-day fully functional demos are available by software code.

# THANK YOU

---

CHCNAV

Make your work more efficient